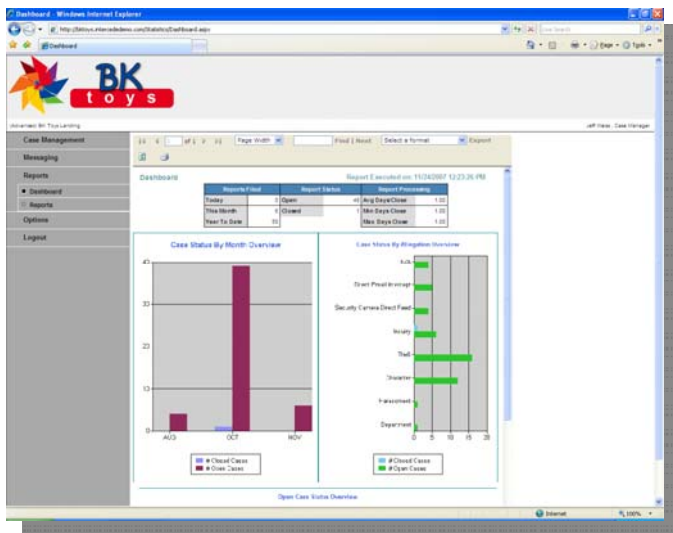




To help you monitor your organization, Suite, Intercede's flagship solution for intelligent incident and allegation management, offers a wide range of standard reports, accessible with the click of a mouse!. Reports are lists, summaries, and analyses of your data, which you can display or print or export for further analysis.

Custom Reports

You can create new custom reports to access exactly the information you need – when you need it. With our user friendly, point and click interface, you can select any field or data element to include in a real-time, up to the minute extract to export and manage with any industry standard tool, such as Microsoft Excel or Business Object's Crystal Reports. With custom report types, you can enable users to create reports from predefined standard and custom objects or object relationships.



Dashboards

Access to the Suite Reporting Area begins at the Dashboard, which at a glance will give you all the key metrics you need to quickly assess the current health of your organization related to all areas – internal and external – of incident and allegation management. Displayed on one screen, statistics related to all allegation types are graphically displayed, and the user has instant ability to drill down, or extract to a common format for analysis using a third party reporting tool.

Standard Reports

Availability to a standard set of reports is included with every activation – and YOU select the specific reports that will help you manage your GRC needs! Standard reports include:

Allegation Reports

- Allegation Mapping
- Allegation Summary
- Allegation within Region
- Allegation Report
- Allegation within All

Case Summary Reports

- Case Summary with Detail
- Case Summary within All
- Case Summary By Allegation w/ Region
- Case Summary By Allegation w/ All
- Case Summary within Region
- Case Summary By Allegation Report

Case Delinquency Reports

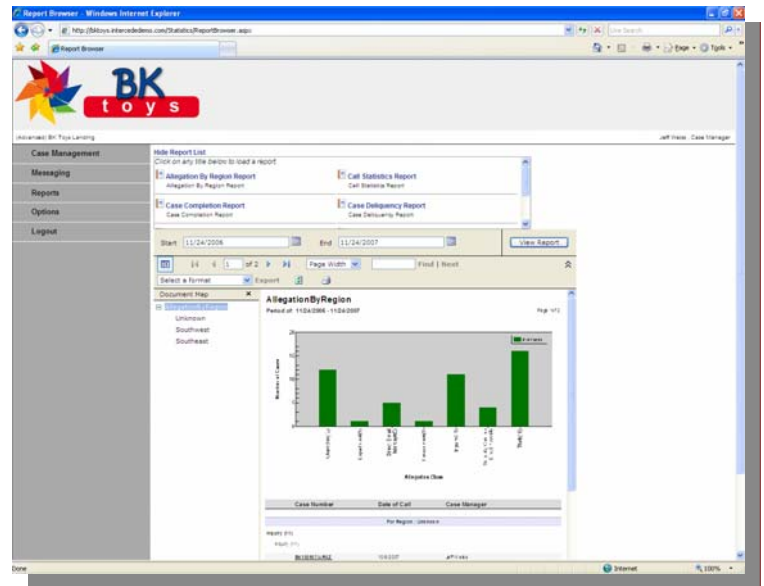
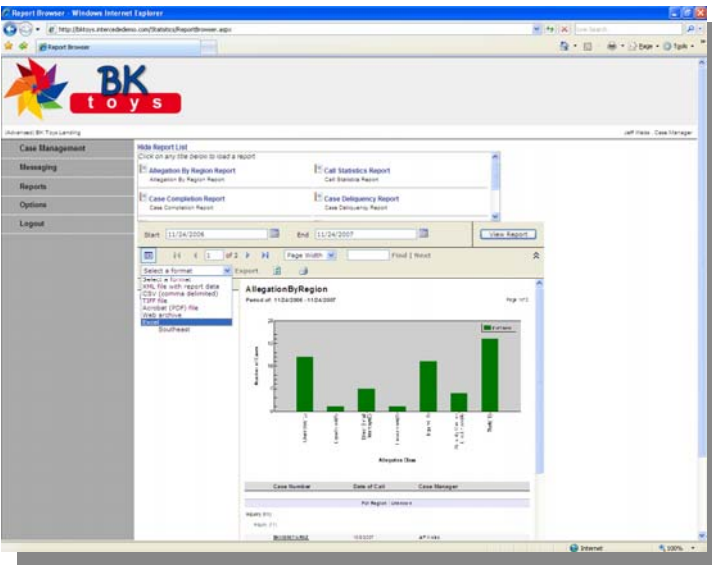
- Case Delinquency within Region
- Case Delinquency Report
- Case Delinquency within All
- Number Of Cases Report

Case Completion Reports

- Case Completion Report
- Case Completion Report within Region
- Case Completion Report within All

Ease of Use

Reports are generated on demand and include up to the minute information, simply by clicking on any of the standard or pre-defined reports. That data is then displayed on the screen and can be stored, printed or even exported to a third party reporting application.



With just a click of the Export Data button, a drop down menu lets you determine the best format to facilitate easy use of the exported dataset, ranging from a simple .CSV format able to be read by any third party reporting tool, to an application specific format such as .XLS for Microsoft Excel.

All reports can also be displayed in Adobe's industry leading .PDF format for easy "small file" distribution to the necessary constituencies within your organization.

With a wide variety of comprehensive and easy to use "point and click" standard and tailored reports, simple user defined data extracts and intuitive PDF generation for information distribution, eSuite Reporting from Intercede transforms your data into actionable information – where and when you need it most.

eSuite from Intercede. Early Detection . . . Effective Response.



Microsoft, Excel and Microsoft Excel are registered trademarks of Microsoft Corporation. Crystal Reports is a registered trademark of Business Objects, Inc. Adobe is a registered trademark of Adobe Systems Corporation.

About Intercede

Headquartered in Charlotte, NC, Intercede was founded by Global 50 business leaders in human resource and risk management in partnership with the leading workforce conflict management litigators and arbitrators. These thought leaders joined forces with a group of software design visionaries and the result has been the most scalable and robust Software-as-a-Service risk management solution available today.